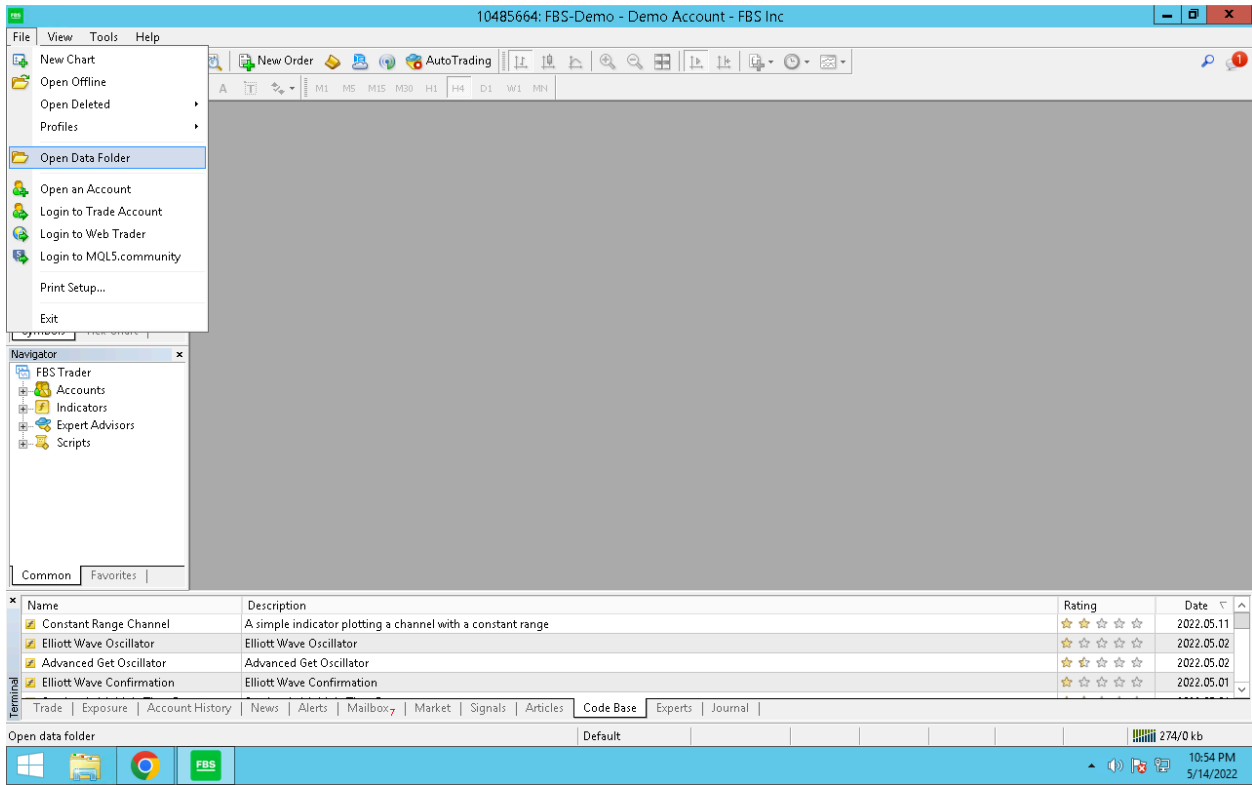
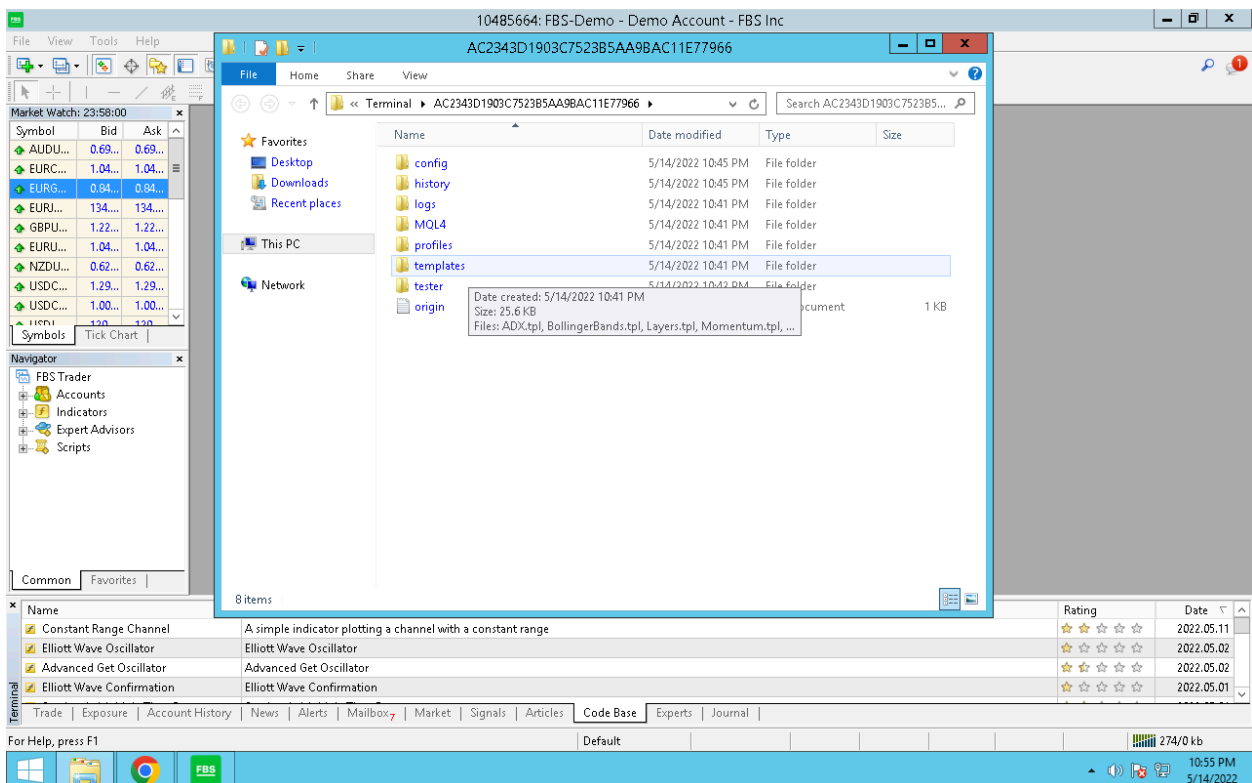
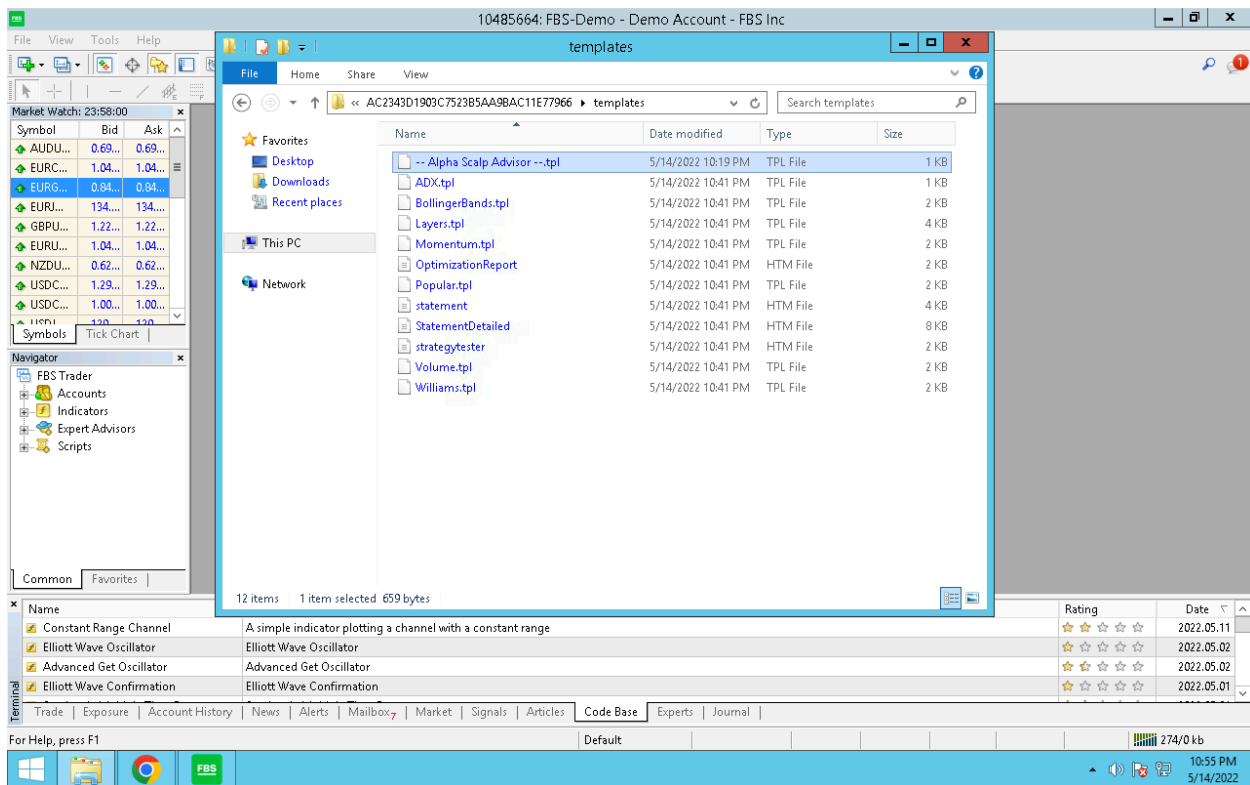


Installing the EA into Metatrader 4. Open Data Folder.

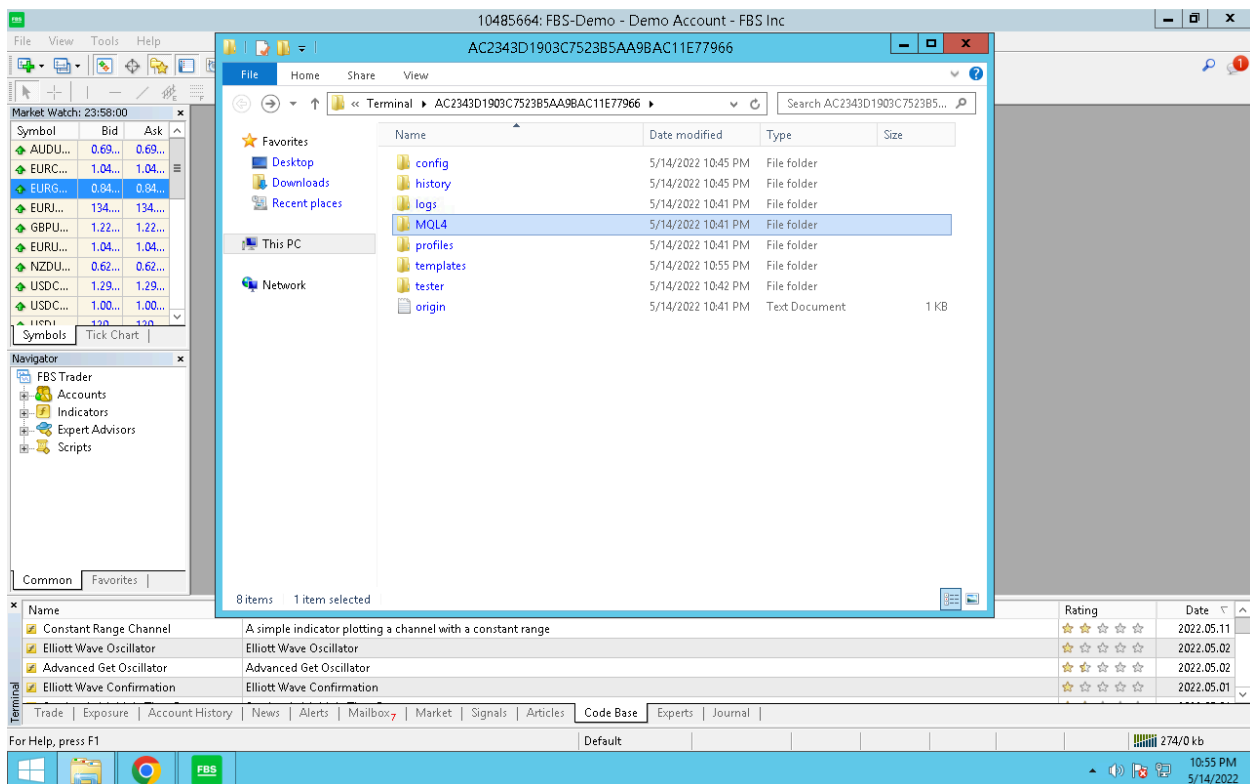


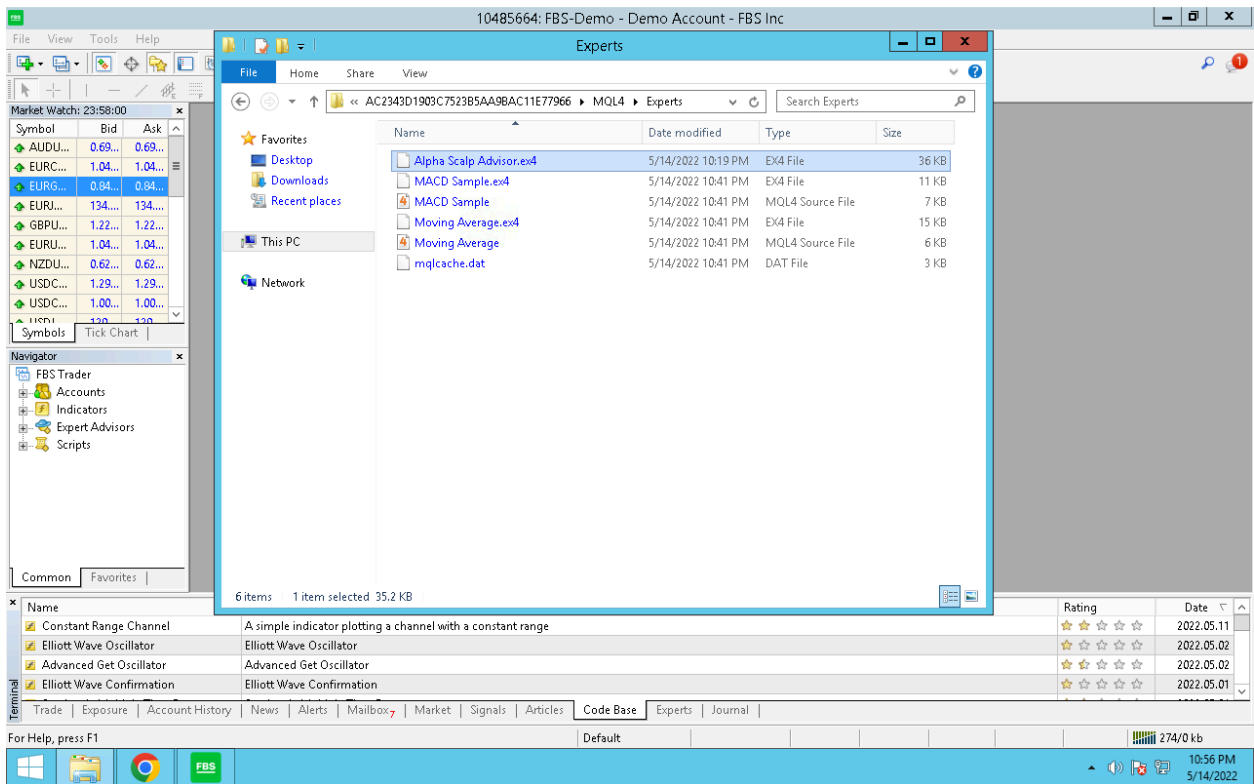
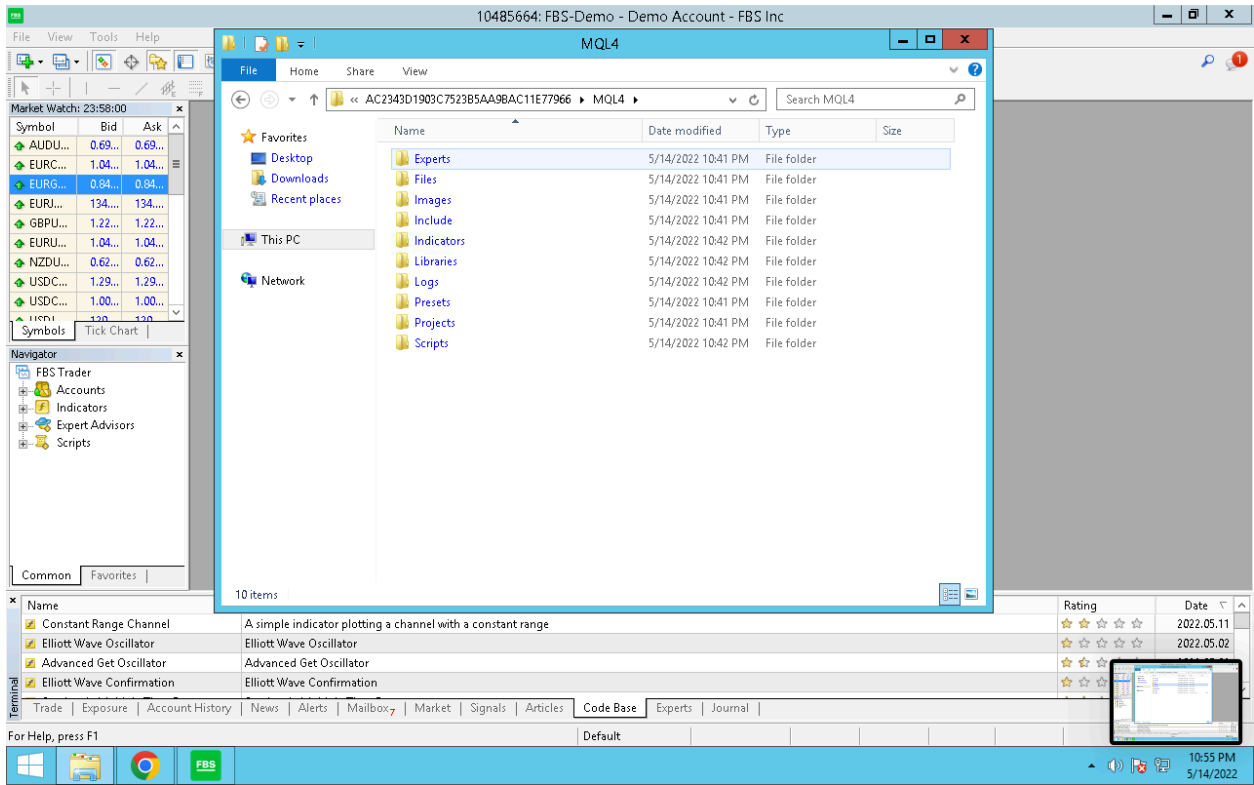
Copy and past the .tpl file into the templates folder.



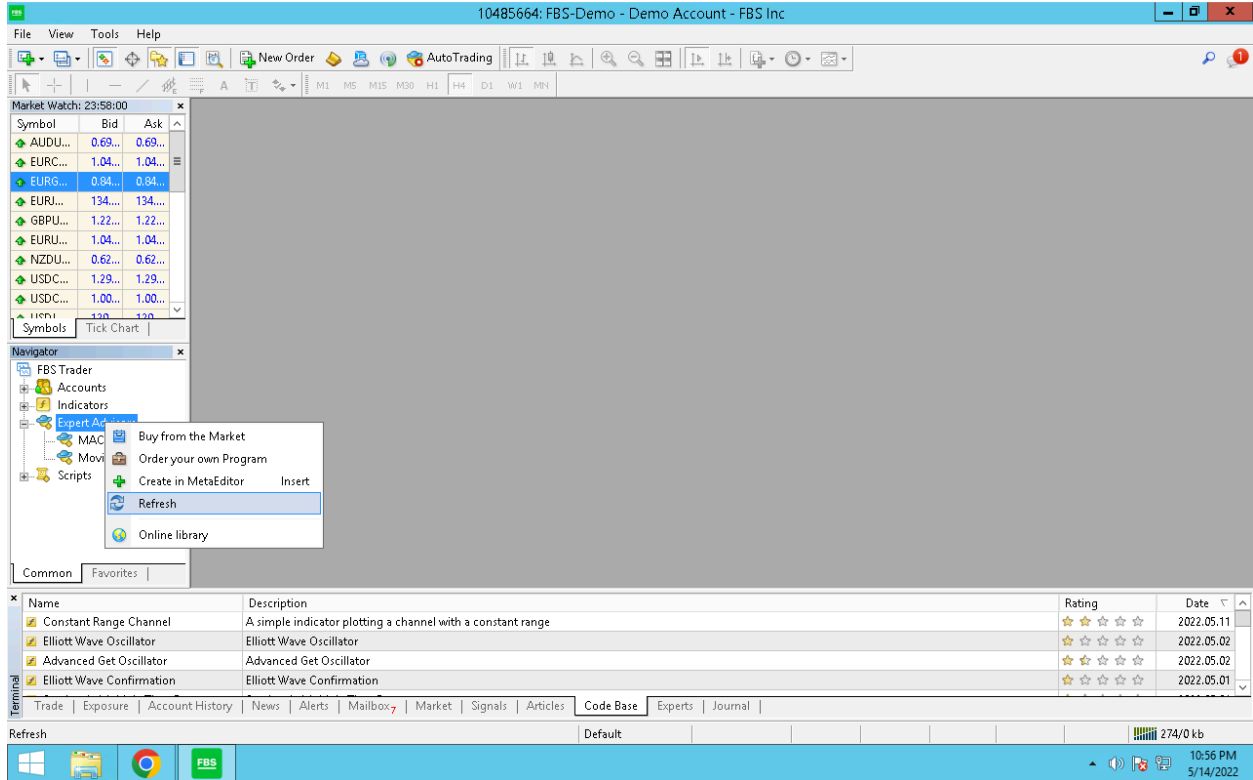


Next we want to install the .ex4 file into MQL4 → Experts

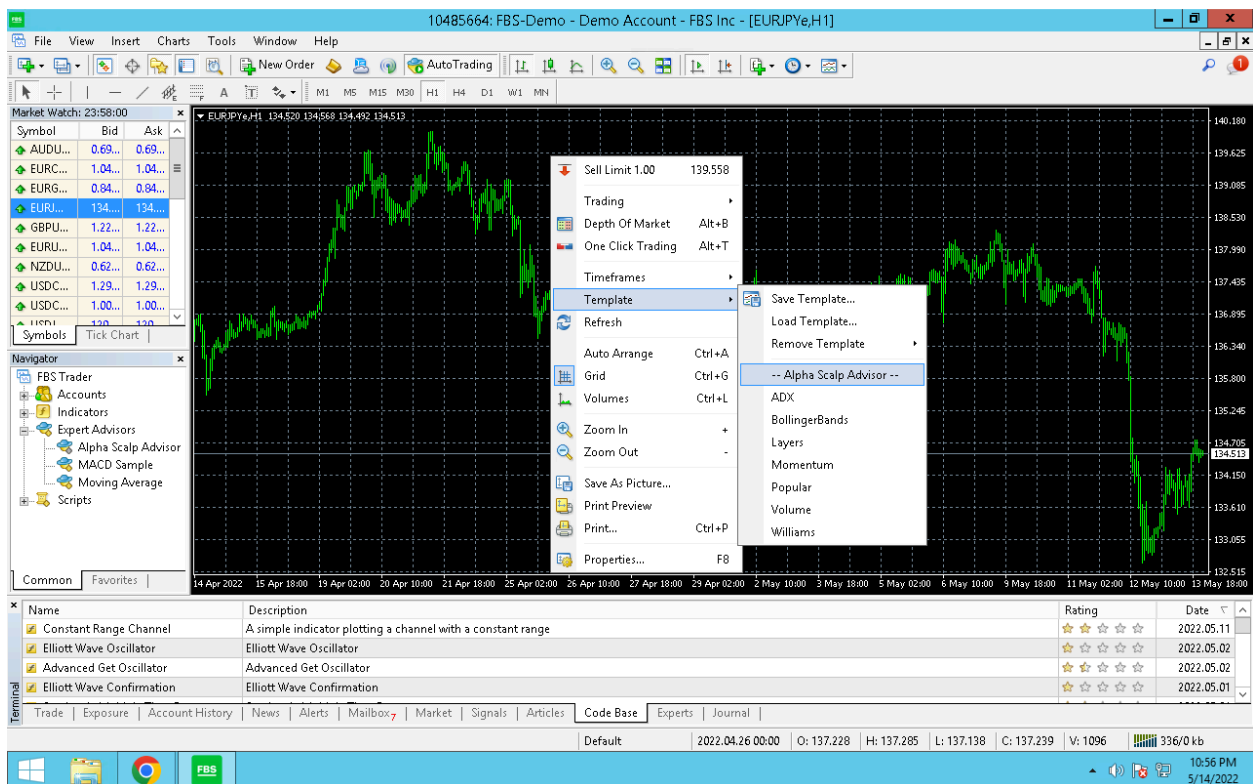




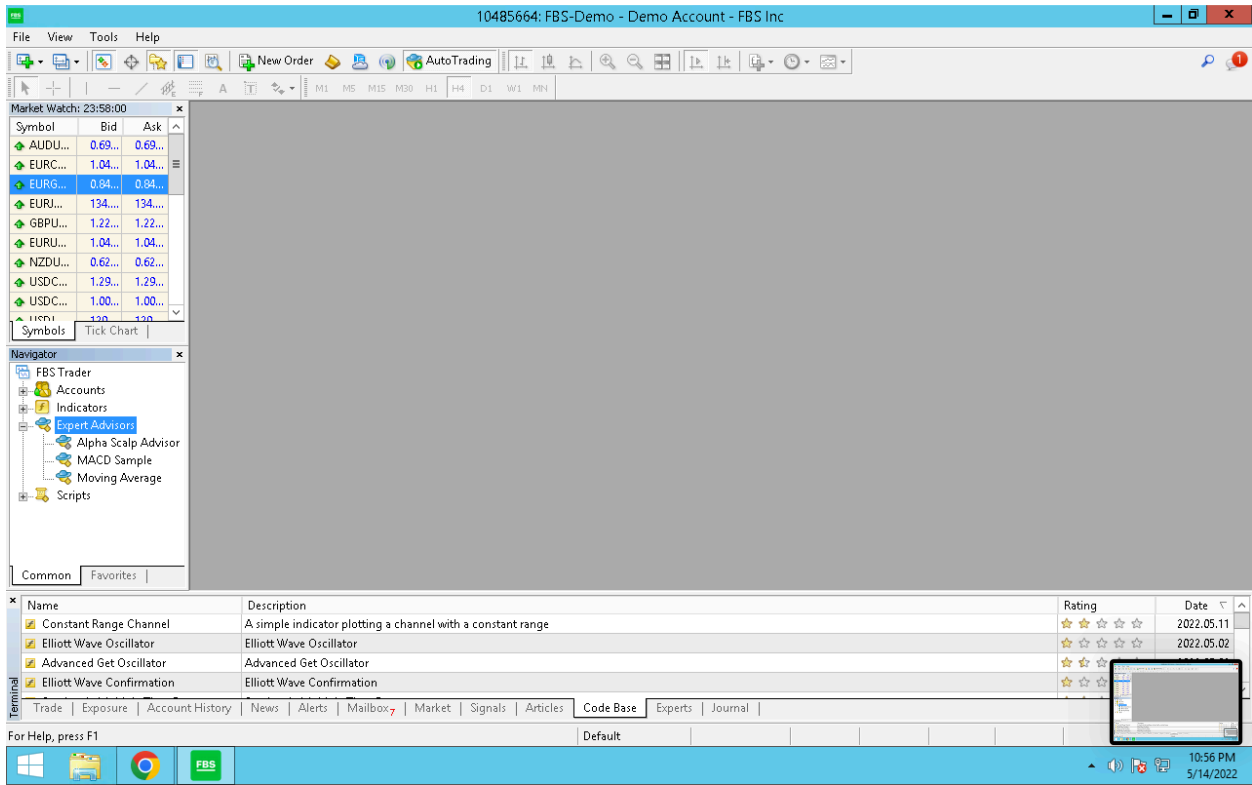
Click Refresh.



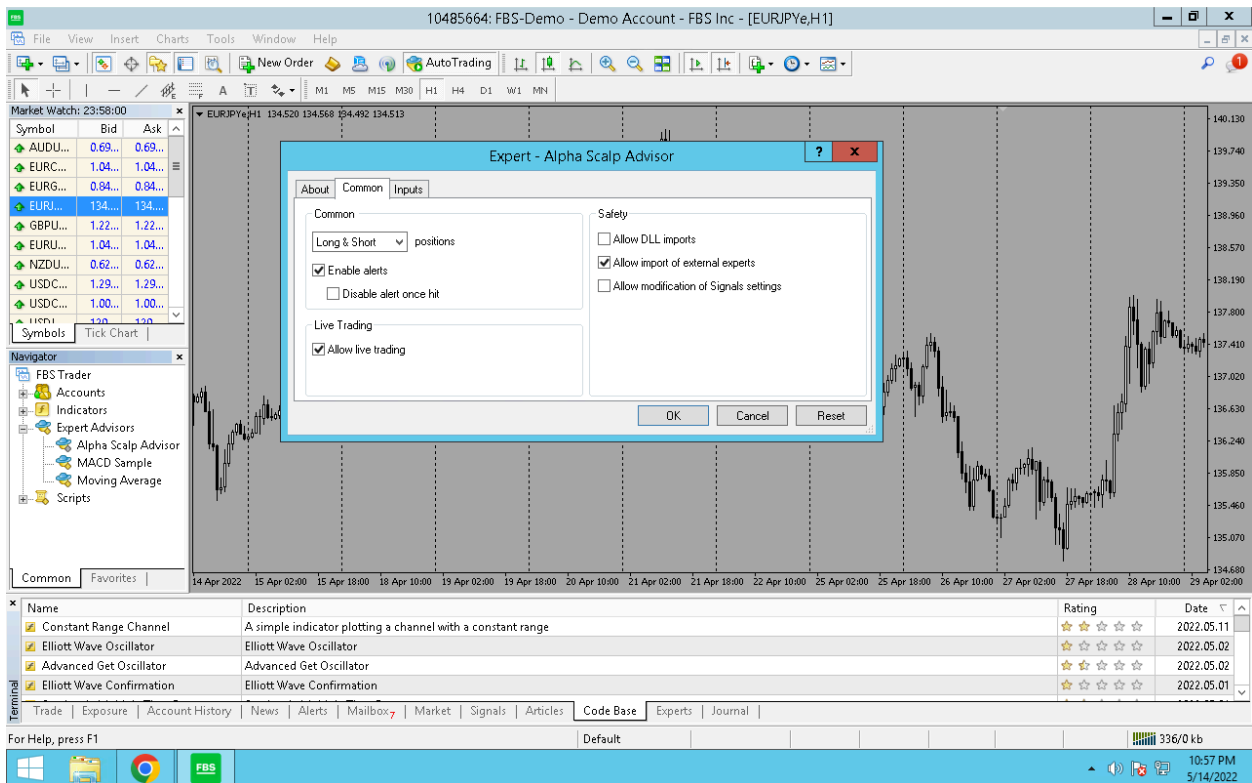
You may choose to apply the template if you wish.



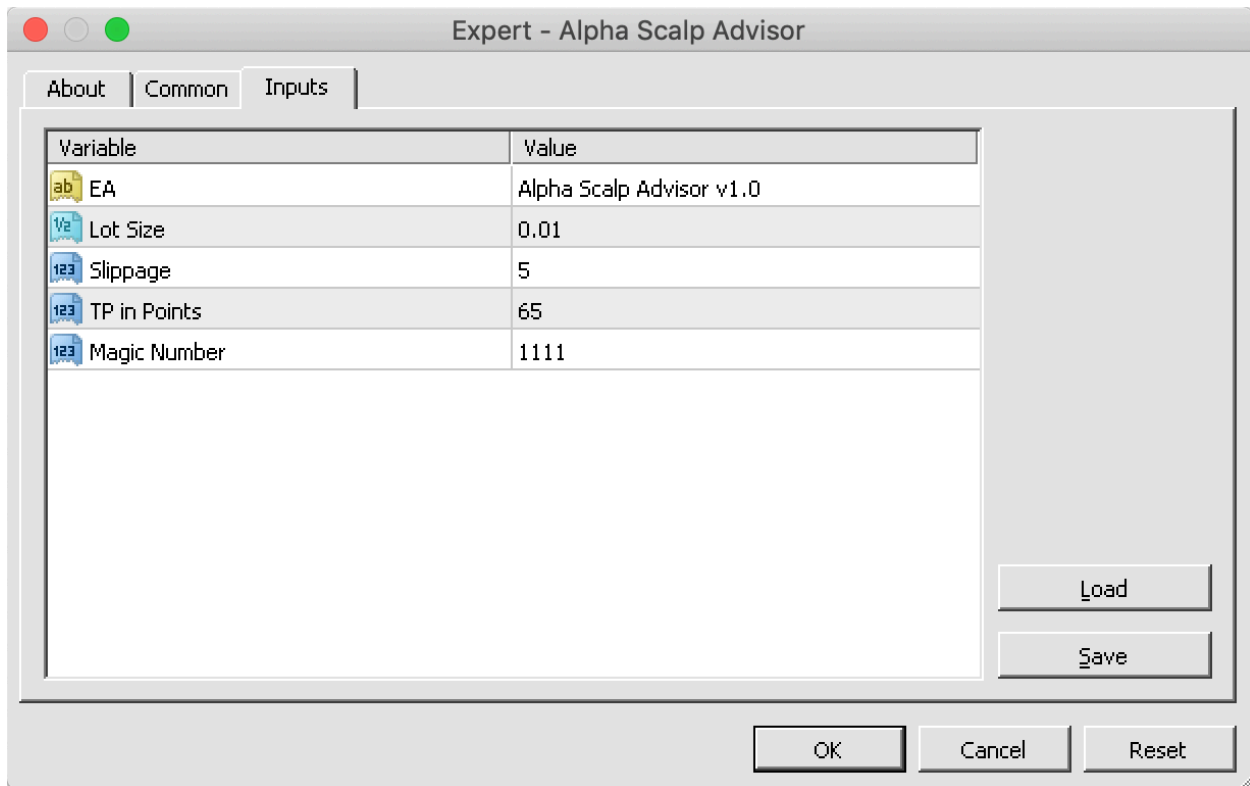
Alpha Scalp Advisor is now visible in the menu.



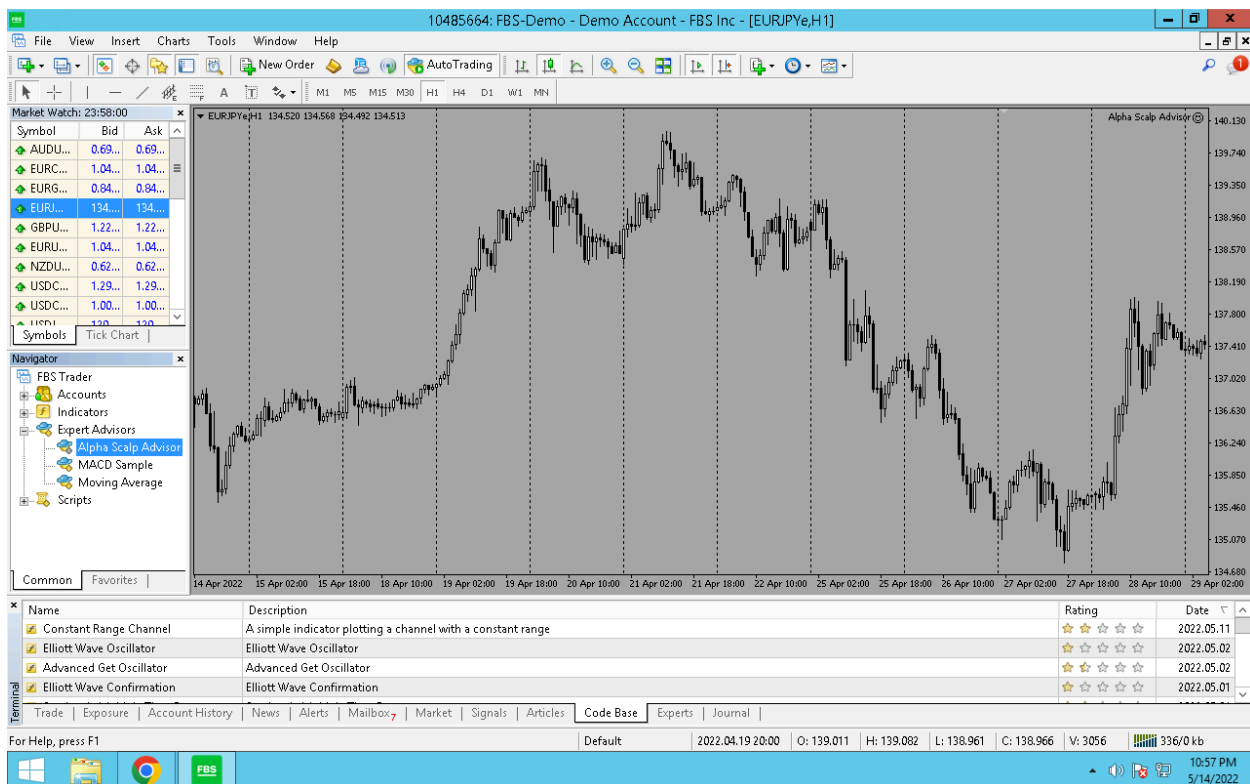
Drag it across the screen and click "Allow live trading".



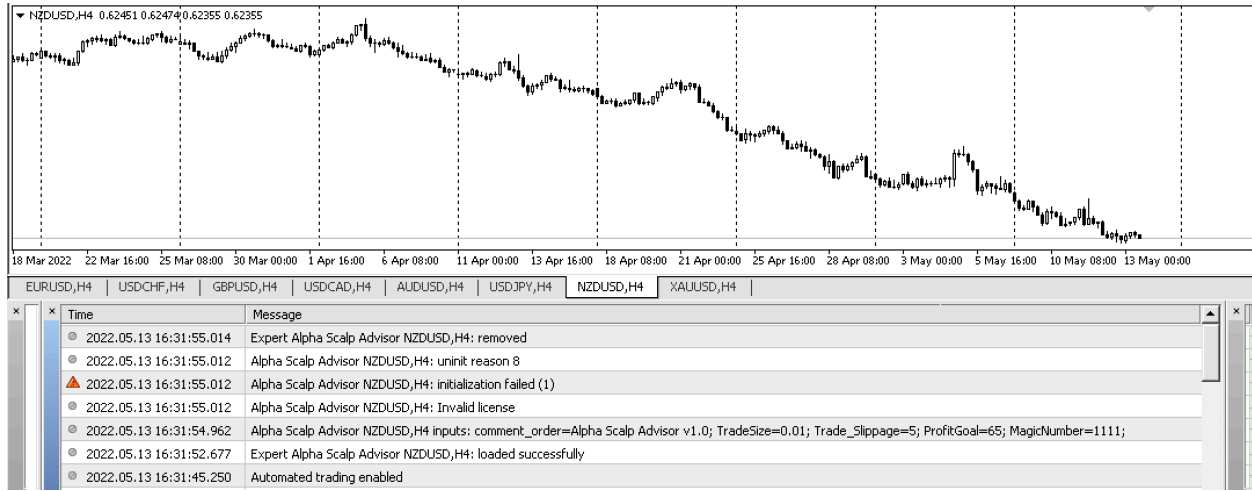
Input the settings you desire.



Make sure that AutoTrading is turned on.



If the EA fails to load to due a license discrepancy, this message will print.



Otherwise, it will soon enter into a position.

